



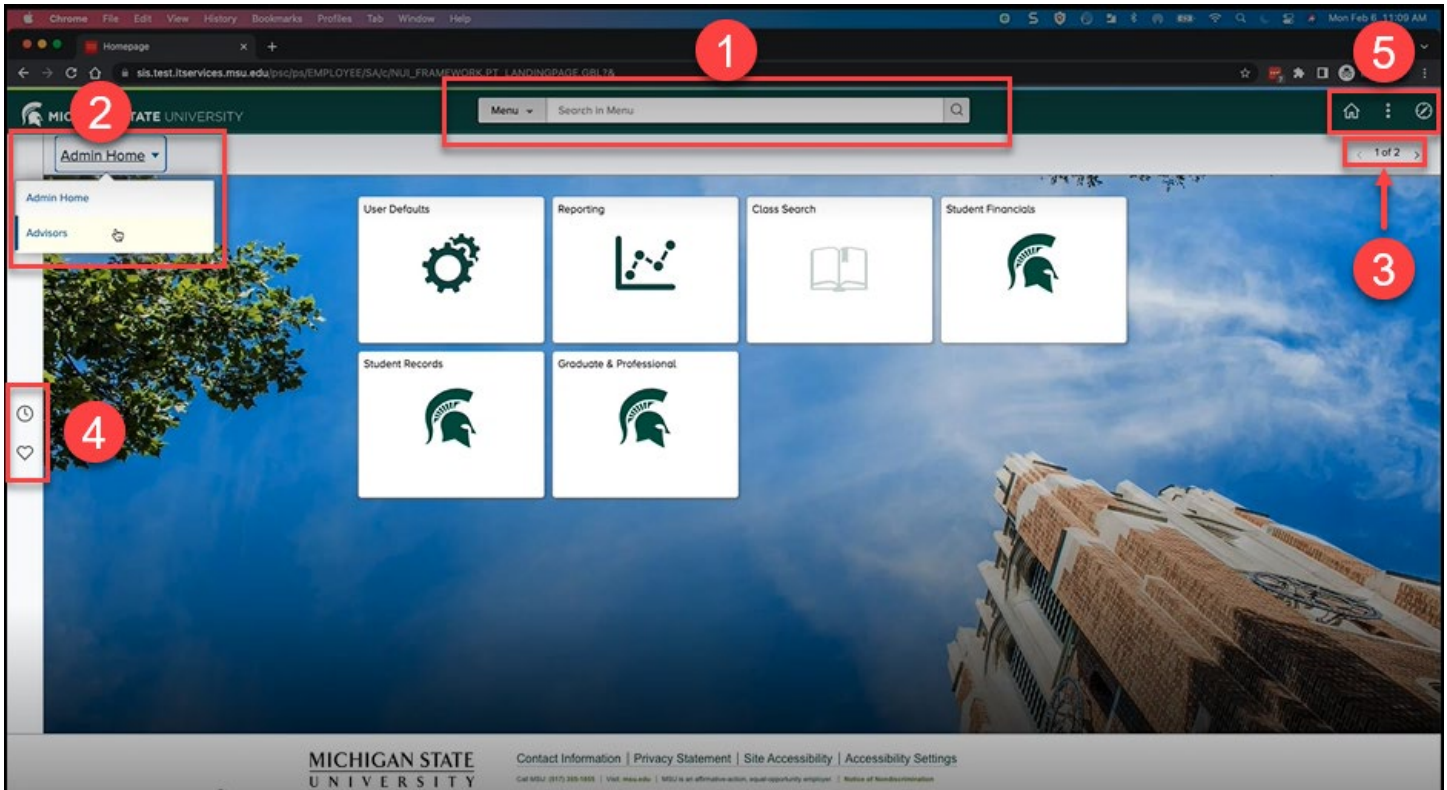
## Navigation Quick Guide Updates

### New Features for CS Navigation

New CS navigation features include:

- An expanded search feature (top center)
- A dropdown homepage menu (top left)
- Two ways to toggle between homepages
- Multiple ways to access **Recently Visited** homepages and **Favorites**
- Changes to some homepage icons
- Changes to **NavBar:Menu**
- Customization options for the **NavBar:Menu**


### Overview

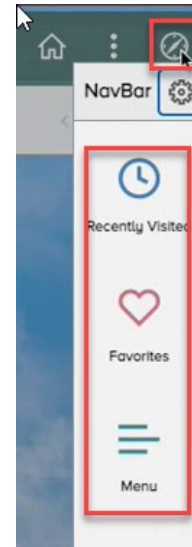


1. The first change to note is the new location of the search feature (magnifying glass) from the top right to the center of the homepage.



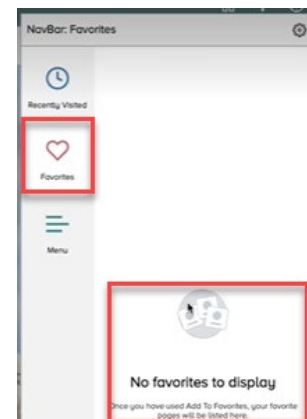
2. Second, the dropdown menu used to change from one homepage to another (if you have multiple homepages) has moved to the top left.
3. Third is a new feature, added to the top right, to allow you to toggle between your homepages.
4. Fourth is a new gray menu bar located on the left side of the homepage, with **new icons** for **Recently Visited** and **Favorites**.
5. The number of icons in the **top right menu** bar changed from five to three icons. The content available from the Compass icon has been updated. See below:

- **My Favorites** has changed from a star to a **Favorites** heart .
- **Navigator** has changed from a document icon to a **Menu** icon.



## NavBar

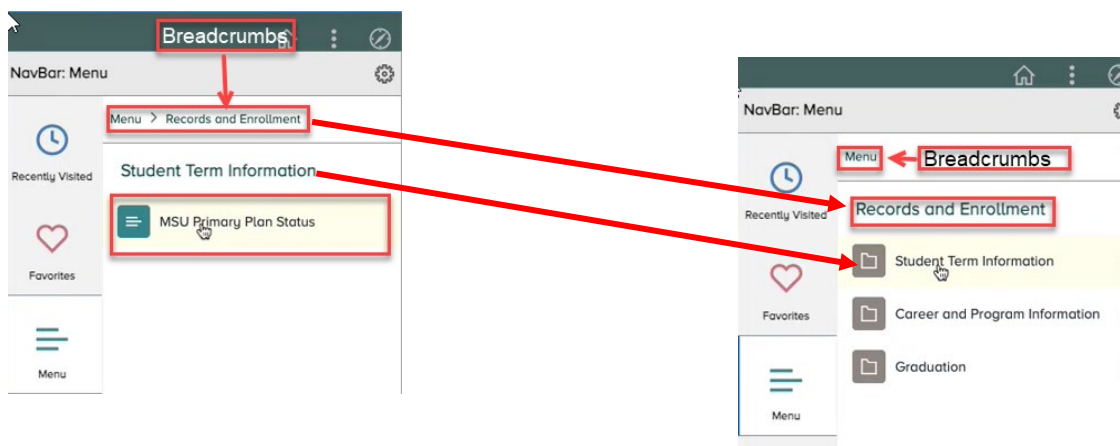
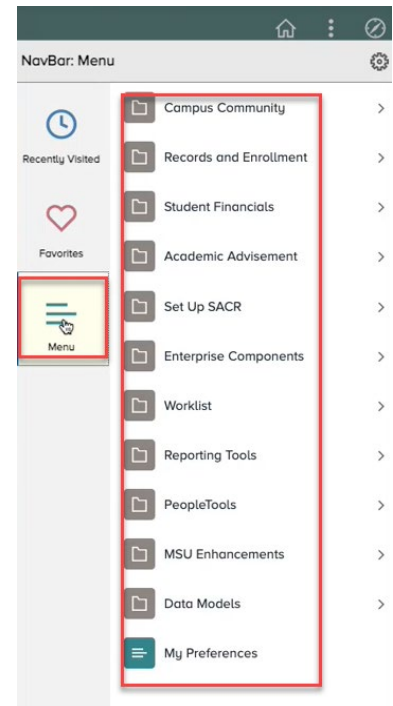
- The **NavBar: Menu** is still accessed through the **compass** icon.
- The **NavBar** options and **icons and text displayed below the compass have changed to Recently Visited, Favorites, and Menu**. The **functions of these icons** remain the same.





## The Menu Display and New Navigation Options

- **Menu icon** replaces **Navigator**.
- **Menu icon** displays the pages and components you have access to in Campus Solutions.
- The **navigation has been updated**. The navigation is similar to the Finder function on a PC.
  - If you click on a folder, you will move to a lower level within the file area.
  - Breadcrumbs will appear at the top as you move deeper into the file structure.
  - Use breadcrumbs to navigate back to previous levels or the main menu (Menu).

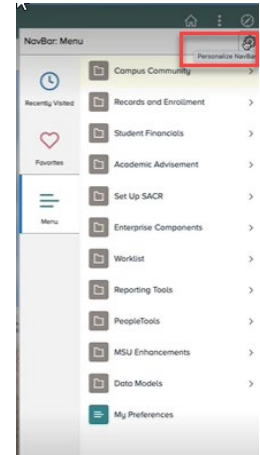




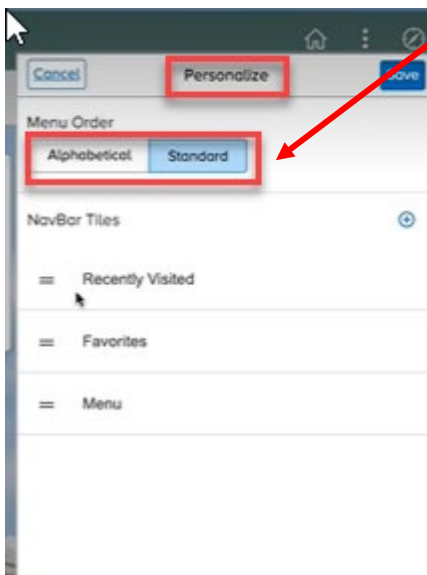
## New

### NavBar: Menu Personalization

- You can now personalize the display of content in the **Menu** of the **NavBar** using the Gear icon at the top right corner of the **NavBar: Menu**.

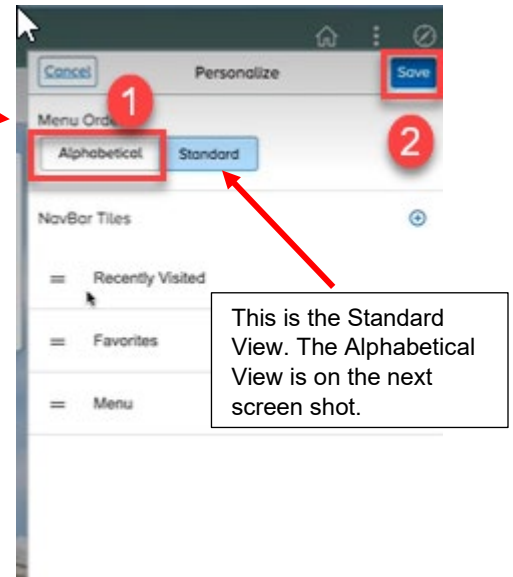


- You can choose **Standard Order** (below) or **Alphabetical Order**.





1. Select the option you want.
2. Then click **Save** in the top right corner and your personalization will be complete. You may change this setting freely, depending on your preferences.



- This is the view of the Menu customized to **Alphabetical** order.
  - You may change this setting freely, depending on your preferences.

